

TIBCO COMPOSITE APPLICATION BUNDLE

AT A GLANCE

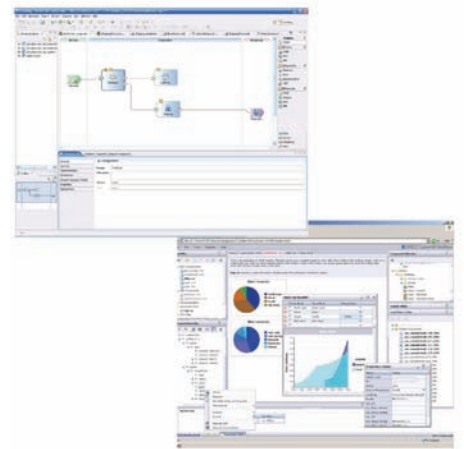
TIBCO Composite Application Bundle is designed to help companies rapidly build and deliver end user applications that consist of services from a service-oriented architecture (SOA). The bundle offers a flexible way to integrate back-end data sources and applications and to assemble and deploy composite applications.

BENEFITS

- Improves the productivity of developers by promoting service reuse with a common service model and by providing more than 100 customizable GUI, data, and communication components that can be used to assemble applications.
- Reduces architectural complexity by providing a standards-based grid architecture that serves as a technology neutral platform with service containers for .NET and Java. These containers provide a framework for the development and deployment of new business logic.
- Reduces the cost and time of developing applications by providing visual tools that enable drag-and-drop assembly of application screens and service assemblies.
- Simplifies the management and improves the operational control of these composite applications by making service location, transport, and protocol independent through the virtualized assembly and composition of services.

Companies continue to focus on building and deploying applications that leverage the IT assets they already have in place, while providing a flexible way to manage them in the context of ever changing business requirements. Composite applications represent a means to define a new application that is largely based on existing functions or assets. The challenge with building these applications is how to access the existing functions and rapidly include them in new applications and to do it in a manner that allows for change.

The TIBCO Composite Application Bundle allows companies to maximize the benefit of their existing investments in IT assets and further increase the ROI they have already achieved by using those assets in new composite applications. It also allows companies to develop new services in Java or .NET and include them in the composite applications. The bundle provides companies with access to a broad and robust set of products that are based on industry standards. TIBCO ActiveMatrix™ is the foundation of this bundle and offers an industry leading set of products including, TIBCO ActiveMatrix™ Service Grid, TIBCO ActiveMatrix BusinessWorks™, and TIBCO General Interface™.



TIBCO Composite Application Bundle makes it easy for developers to assemble and deploy rich applications that are built leveraging existing assets.

ATTRIBUTES & CAPABILITIES

Platform Neutrality and Standards Leadership

TIBCO's commitment to operating in heterogeneous environments helps customers leverage the existing IT assets they have in place, and supports departmental and project-based initiatives. It allows organizations to maximize the benefits of their existing skill sets and resources.

Supports leading standards and protocols including XML, HTTP, BPEL, SOAP, FTP, etc.

Extensive web services capabilities including a SOAP processor and support for SOAP over JMS and HTTP/S.

Built-in authoring tools for XML schema, native parsing, and an XLSX-based mapping tool and transformation engine.

Distributed Grid-Based SOA Architecture

The TIBCO Composite Application Bundle includes software that can tap into the power and performance of TIBCO's grid architecture which extends TIBCO's time-tested bus-based design.

Enables distribution of information using technology best suited for each scenario: synchronous or asynchronous, publish and subscribe or request and reply, HTTP/S, FTP, JMS, MQSeries, TCP/IP, etc.

Provides built-in fault tolerance and high availability by enabling the distribution of tasks across engines.

Provides the capability to scale both horizontally and vertically.

Supports varying levels of security and assurance depending on requirements.

Integrated Design Environment for Composite Application Assembly

Provides a set of intuitive development tools for modeling, assembling, deploying, and managing composite applications.

Graphical interface virtually eliminates coding to enable configuration-based assembly of assets.

Built-in debugger supports testing and validation of projects within the design environment.

Web-based interfaces for delegated administration and management.

Unified Foundation for Disparate Service Technologies

TIBCO Composite Application Bundle includes managed service containers for .NET and Java and provides a service container framework. This allows IT organizations to develop new services for use in the composite application and manage those heterogeneous services through one unified framework.

BUNDLE INCLUDES

- TIBCO ActiveMatrix BusinessWorks
- TIBCO ActiveMatrix Service Grid
- TIBCO General Interface

About TIBCO

TIBCO Software Inc. (NASDAQ: TIBX) is a provider of infrastructure software for companies to use on-premise or as part of cloud computing environments. Whether it's efficient claims or trade processing, cross-selling products based on real-time customer behavior, or averting a crisis before it happens, TIBCO provides companies the two-second advantage™ - the ability to capture the right information, at the right time and act on it preemptively for a competitive advantage. More than 4,000 customers worldwide rely on TIBCO to manage information, decisions, processes and applications in real-time. Learn more at www.tibco.com.

Global Headquarters
3303 Hillview Avenue
Palo Alto, CA 94304

Tel: +1 650-846-1000
+1 800-420-8450
Fax: +1 650-846-1005

www.tibco.com

